

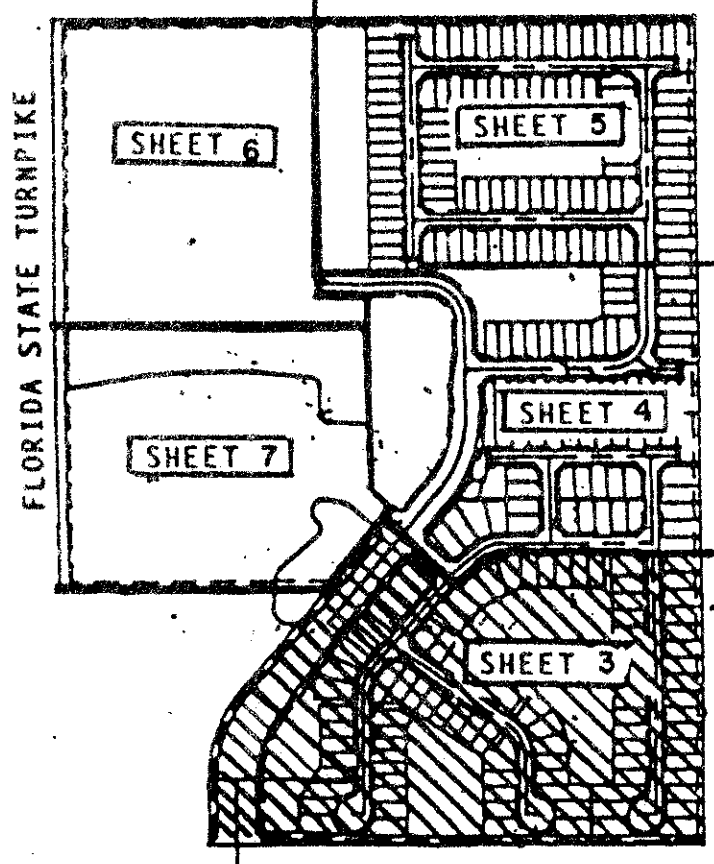
INDIAN HILLS, PLAT NO. 1, A P.U.D.

A PLAT OF A PORTION OF SECTIONS 20 & 21, TOWNSHIP 45 SOUTH, RANGE 42 EAST, AND ALSO BEING A REPLAT OF A PORTION OF TRACTS 49-54, 75-86, & 107-111, BLOCK 49 AND THAT PART OF THE 30 FOOT WIDE PLATTED ROAD RIGHT-OF-WAY AS SHOWN ON THE PLAT OF PALM BEACH FARMS COMPANY PLAT NO. 3, AS RECORDED IN BOOK 2, PAGES 45-54, OF THE PUBLIC RECORDS OF PALM BEACH COUNTY, FLORIDA

JUNE, 1995
SHEET 3 OF 7

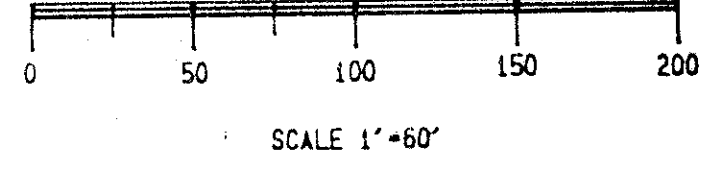
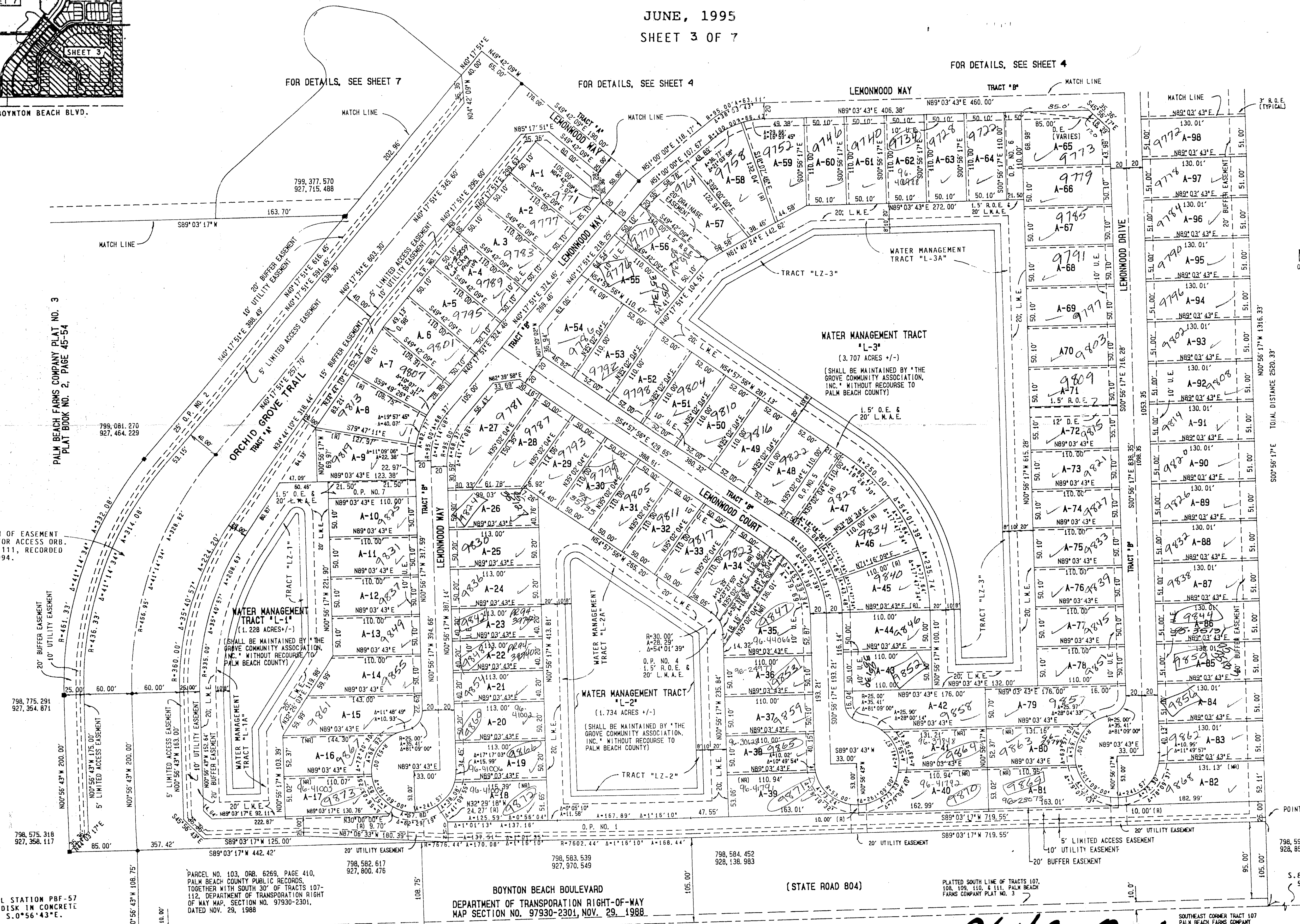
0640-001

135



BOYNTON BEACH BLVD.

FOR DETAILS, SEE SHEET 4



SCALE 1"=60'
TOTAL DISTANCE 2820.33'
P.L.M. PERMANENT REFERENCE MONUMENT
P.C.P. PERMANENT CONTROL POINT
U.E. UTILITY EASEMENT (SIZE AS NOTED)
L.A.E. LIMITED ACCESS EASEMENT
L.M.E. LAKE MAINTENANCE EASEMENT
D.E. DRAINAGE EASEMENT (SIZE AS NOTED)
O.S. OPEN SPACE
B.E. BUFFER EASEMENT (SIZE AS NOTED)
L.E. LAKE ENTRANCE EASEMENT
R.O.E. ROOF OVERHANG EASEMENT (3' OR L.S.)
W.S.T. WELL SITE TRACT
(R) RADIAL PROPERTY LINE
(NR) NONRADIAL PROPERTY LINE
L.Z. LITTORAL ZONE
(NR) NONRADIAL PROPERTY LINE

TAR-443
SUBDIVISION # Indian Hills, Plat No. 1
BOOK 75 PAGE 135
FLOOD MAP # 185A
ZONING PUD
QUAD # 50
SE
PUB NAME SPARK, INC. 20/245/41/41

DECLARATION OF EASEMENT AGREEMENT FOR ACCESS ORB. 8482, PAGE 111, RECORDED OCT. 27, 1994.

PALM BEACH FARMS COMPANY PLAT NO. 3
PLAT BOOK NO. 2, PAGE 45-54

PALM BEACH FARMS COMPANY PLAT NO. 3
PLAT BOOK NO. 2, PAGE 45-54

P.L.M. PERMANENT REFERENCE MONUMENT
P.C.P. PERMANENT CONTROL POINT
U.E. UTILITY EASEMENT (SIZE AS NOTED)
L.A.E. LIMITED ACCESS EASEMENT
L.M.E. LAKE MAINTENANCE EASEMENT
D.E. DRAINAGE EASEMENT (SIZE AS NOTED)
O.S. OPEN SPACE
B.E. BUFFER EASEMENT (SIZE AS NOTED)
L.E. LAKE ENTRANCE EASEMENT
R.O.E. ROOF OVERHANG EASEMENT (3' OR L.S.)
W.S.T. WELL SITE TRACT
(R) RADIAL PROPERTY LINE
(NR) NONRADIAL PROPERTY LINE
L.Z. LITTORAL ZONE
(NR) NONRADIAL PROPERTY LINE

5.89°03'17" 567.97'
75/135
Joe Tucker
RICHARD L. SHEPHERD and Associates
310 SOUTH FEDERAL HIGHWAY
P.O. BOX 798
BOYNTON BEACH, FLORIDA 33485
Phone: (407) 391-0288
Fax: (407) 726-4546
FAX: (407) 726-7548

0640-001
INDIAN HILLS, PLAT No. 1

PALM BEACH FARMS COMPANY PLAT NO. 3
PLAT BOOK NO. 2, PAGE 45-54

SOUTHWEST CORNER TRACT 107
PALM BEACH FARMS COMPANY
PLAT NO. 3

CONTROL STATION "HAGEN"
1/8" LG T STATION BRASS DISK
85.0°56'43"E